



INFORMATION BOOKLET 2016





CONCRETE MANUFACTURERS ASSOCIATION

Address: Office 0400, Standard Plaza Building,

440 Hilda Street, Hatfield, Pretoria

Tel: (011) 805-6742 • Email: admin@cma.org.za • Website: www.cma.org.za

VISIT OUR WEBSITE FOR MEMBERSHIP DETAILS AND APPLICATION

Proudly sponsored by





■ SAFEGUARDING EXCELLENCE IN PRECAST CONCRETE

The Concrete Manufacturers Association (CMA) is the primary representative of the precast concrete industry. Now in its 44th year, it initiates standards in close cooperation with StanSA and collaborates with its members in developing new products and services.

Precast concrete is a building material which slots very comfortably into the modern world of fast track and modular construction, in many instances leading the way with innovative technologies and applications.

The CMA's promotional activities target architects, engineers, developers, contractors and property owners and the pooled knowledge and expertise of its members fosters an environment which encourages the development of innovative, environmentally and community-friendly products.

The Association's prime focus is on ensuring that its members' products are applied correctly and that the product manufactured by the members is of good quality and compliance to the relevant product specifications.

Members are encouraged to hold accredited product certification such as the relevant SANS standard or to manufacture to specifications laid down by their clients. Should a problem arise the CMA carries out an investigation, and, if the product does not conform to the required standard, the member company is obliged to rectify the situation.



Down the years the CMA has published numerous manuals, brochures and audio visuals on the practical application of precast concrete and this material is available on the CMA website www.cma.org.za. It also arranges refresher courses and holds seminars to introduce new technology and methodology, often featuring overseas experts.

The Association was recently restructured into two operating divisions: Marketing and Quality Assurance. The marketing division will promote the correct use of precast concrete products and the quality assurance division will certify members for the CMA Mark of approval.

■ SETTING THE STANDARDS

Over the past 15 years the CMA has virtually re-written, amended or upgraded nearly all the national standards on precast concrete which focus on the manufacture and application of precast concrete. The most recent examples of standards

revision include: SANS 1058 Concrete Paving Blocks; SANS 541 Concrete Paving Slabs; and SANS 927 Concrete Kerbs and Channels. The preparation of new and the revision of existing standards is undertaken in collaboration with bodies such as The South African Bureau of Standards and Agrément South Africa. In addition, the Association has its own mark of approval and accreditation systems.

■ THE CMA MARK AND ACCREDITATION SYSTEMS

Open to all members, CMA Mark and Accreditation systems are voluntary and comprise:

CMA Accreditation

- CMA Accreditation is aimed at producer members who don't require a mark or national product certification. Associate, non-producer, contractor and cement-producer members are also eligible for accreditation. Accreditation certificates are issued after successful assessments.



Accreditation requirements include:

- Compliance with the Occupational, Health and Safety Act and a fully implemented Quality Management System.
- Annual compliance audits.

The CMA Mark

Requirements include basic compliance with the Occupational, Health and Safety Act, a fully implemented quality management system, and applicable quality specifications based on random product analysis. Products are tested on site with the manufacturer's own calibrated equipment. Independent analysis at accredited laboratories is also initiated from time-to-time.

Qualifying members are issued with a certificate of compliance and are allowed to display the CMA mark of approval on their websites, documentation and products.



Auditing

Accreditation and mark holders are audited by CMA-approved system auditors. System audits occur twice annually, and in addition, random construction site-based audits are also initiated from time to time.

CMA Listing

Accreditation and mark holders are listed on the CMA website.

Approval Process

The CMA is the custodian of the accreditation and mark programs. They fall under the CMA's quality assurance, SANAS-accredited, operational division. Accreditation and mark certification is issued by the CMA only after final vetting by an independent approvals board.

Fees

Members' fees for either accreditation or the mark are used to pay the auditors, administer the programs and remunerate the impartiality committee. They are also used for marketing, which forms an essential component of both programs. As the CMA is a non-profit association, any excess funds are used to promote precast concrete and for day-to-day running expenses. The accreditation/mark fee structure can be viewed on www.cma.org.za.

■ OPERATIONAL AND MANAGEMENT STRUCTURE

The Concrete Manufacturers Association NPC is divided into two operational division: Marketing and Administration. The





Concrete Manufacturers Association Certification Services Company is divided into three divisions: Administrative, Marketing and Quality Assurance. The promotion of precast concrete products is the function of the CMA Non-profit Company under the leadership of a marketing manager. The CMA Mark of approval is the function of the CMA Certification Services company under leadership of a general manager. The executive boards for both companies comprises an executive director and non-executive directors. Administration and finances are the responsibility of the administration manager. These divisional managers are reporting directly to the executive director.

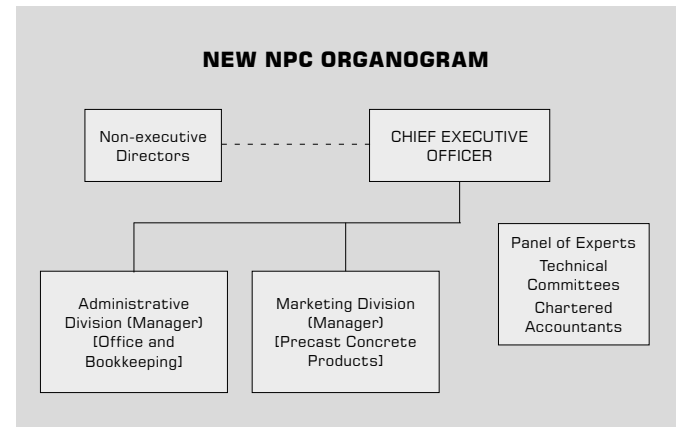
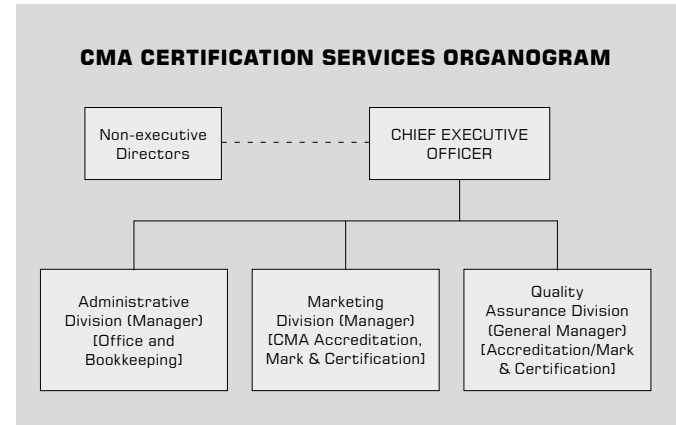
■ MEMBERSHIP

CMA membership is open to all manufacturers of precast concrete products, precast concrete being defined as any concrete product cast in a re-usable mould or form, cured in a controlled environment, and lifted into position. Membership is also open to those non-producers who have an association with precast concrete.

Member Categories

The Concrete Manufacturers Association NPC has various categories of membership namely:

- Producer
- Non-producer
- Associate
- Contractor
- Cement producer.



Producer Members

Producer membership is granted on the basis of the following:

- Production takes place in a purpose-built manufacturing facility
- A quality assurance system is in place
- Occupational, health and safety (OHS) procedures are in use
- Technical and engineering competence
- Financial stability
- Environmental compliance.

Producer members are defined either as Structural (infrastructure/civil engineering products such as pipes, manholes and culverts) or Building (building products such as masonry blocks, roof tiles, concrete slabs and paving blocks) or both depending on the products they produce. If a product range spans both categories then a supplementary fee is charged. Supplementary fees are also charged for every additional manufacturing outlet. All paid-up producer members have voting rights.



Non-Producer members

Non-producer members comprise suppliers of machinery, moulds, technology, admixtures, additives, chemicals and vehicles for pre-cast concrete producers. Non-producer members are entitled to participate and attend all CMA functions and meetings but don't have voting rights.

Associate members

Any professionals such as engineers, architects, quantity surveyors and related associations, institutes, federations and government bodies within the building and civil engineering sectors are eligible for associate membership. Associate members are entitled to participate and attend all CMA functions and meetings but don't have voting rights.

Contractor Members

Contractors who install or construct using precast concrete







manufactured by producer members are eligible for membership. Contractor members are entitled to participate and attend all CMA functions and meetings but don't have voting rights.

Cement Producer Members

Cement producers, blenders, importers, and distributors.

Fee Structure

The up to date membership fee structure can be viewed on www.cma.org.za.



Benefits of CMA membership

- Accreditation and CMA mark program
- Brand exposure on The World of Precast (see page 12)
- Being part of an association which is widely recognised and respected for setting and maintaining best-practice standards
- Access to industry-specific statistical information
- Listing on the CMA website and posting the CMA logo on company stationery, website and packaging
- Participation in the prestigious Awards for Excellence competition
- Inclusion on the CMA mailing list
- A framed membership plaque
- Membership discounts on seminars and educational courses
- Participation in setting national standards for the industry
- Access to best-product design and manufacturing processes
- Opportunities to feature innovative precast concrete projects in the CMA's magazine, Precast
- Client referrals
- Networking opportunities
- Participation in and product displays at exhibitions.

■ SOCIAL RESPONSIBILITY

From 2008 onwards the Association adopted a policy of corporate social responsibility which involved substantial material and technological input from CMA members.

The CMA has made a significant contribution to the provision of subsidy housing by offering CAD-based architect-designed plans

for a 40m² house. Based on genuine modular masonry practice, the CMA House plans are available at no charge to anyone wishing to use them. It is an initiative which, if adopted by housing authorities, can improve building quality and productivity dramatically. And because they are CAD-based, the plans can be used as a template for almost any subsidy housing project.

■ AWARDS FOR EXCELLENCE COMPETITION

Since they were first staged in 1985, the Awards have become the undoubted highlight of the precast concrete industry's calendar. The competition is based on recently completed projects in which technical and aesthetic excellence, among other aspects, are critically assessed by a panel of independent judges drawn from the professions. Held biennially and open to all members, the event provides an excellent vehicle for Southern African designers and project developers to establish themselves as trendsetters across several disciplines, and in doing so, to gain national recognition.

■ EDUCATION

Seminars on new and existing technologies in precast concrete are held regularly. The Association also produces and distributes technical information in the form of software, books, brochures and DVD's for a deeper understanding and more effective application of members' products.

■ THE WORLD OF PRECAST

Launched at the beginning of 2016, the World of Precast is

a web-based reference guide aimed at architects, landscape architects, engineers, quantity surveyors, contractors and property developers. In addition to showcasing precast concrete across its numerous applications via 3D diagrams and photography, it provides CMA members with a valuable supplementary marketing and branding platform. Materials, product suppliers, machinery and equipment suppliers, service providers, locations and contact details are all listed. Visit the site on: www.worldofprecast.co.za

■ MARKETING

Besides publishing technical information, the Association has an official mouthpiece, Precast, a magazine which highlights current projects and case studies in precast concrete technology, and covers some of the more innovative precast trends both locally and internationally.

Press releases and articles on various CMA activities are published in several construction-based journals.

The main challenge facing the CMA is to convince professionals and specifiers that the products and systems it advocates are of considerable advantage to all concerned i.e. specifiers, industry professionals, and of course, the end-user.

The other challenge is to nurture and encourage technical skills and innovation in the manufacture and application of precast concrete industry - to the benefit of all.



THE WORLD OF PRECAST CONCRETE

THE SOLUTION FOR EARLY DEMOULDING

Focusing on the requirements of our precast concrete customers for improving mould turnaround time, we gave Rapidcem its unique formulation. Adding better workability and superior finishes to high early strength exceeds precasters' expectations, making Rapidcem the best product for early demoulding. Innovating higher performance cements is our strength.

LAFARGE: BUILDING BETTER COMMUNITIES

Rapidcem

LOCALLY PRODUCED CEMENT, AGGREGATES AND READYMIX SOLUTIONS.

Rapidcem: adding value for precast customers.

+27 (0) 11 657 0000/1000 www.lafarge.co.za

LAFARGE