



Concrete Support for improving the health of the Nation

**Project Sheet
Community Health Care: Clinics and Hospitals**



Featured in this leaflet:

1. Mbekweni Health Centre

2. Reiger Park Clinic

3. Med Park Clinic

4. Medi-Clinic Pmburg

5. Mulbarton Medical Centre

6. Thembelitsha Rehab Centre

7. Esidweni Community Hall



1. Mbekweni Health Centre, Viedgesville



The Mbekweni Health Centre at Viedgesville lies in typical open veld and is very exposed to the elements. Bands of fairface and rockface concrete block, together with external protruding columns, add focal points of interest to external walls and help to add attractiveness to both the buildings and the site as a whole.



2. Reiger Park Clinic, Boksburg



Apart from its mainstream treatment facilities, this 800m² health complex contains health education facilities together with a health inspectorate.

Concrete products were specified because of their size consistency, an important factor when looking at the detail of some of the designwork, especially in the window surrounds. The use of concrete face brick provides an attractive, extremely durable and virtually maintenance-free exterior.



3. Med Park Clinic, Springs



A quite spectacular example of the versatility and growing attractiveness of today's concrete facings. The contrast between fairface blockwork and rockface modular brickwork sets off the highly impressive entrance collonade to perfection. The reception and passageways show off the highly attractive use of concrete face brick used throughout much of the light and airy interior.



4. Med-Clinic, Pietermaritzburg

Carefully designed to complement the essentially suburban character of its setting, Pietermaritzburg's Medi-Clinic has attracted much positive comment from staff and patients alike. The use of stretcher courses of coloured concrete faceblock creates the equivalent of a highly attractive plinth design that provides a strong visual base to the look of the building, with additional juxta-positioning on the corners as an added attractive feature, complemented by matching concrete rooftiles. The advantages of modularity, consistency of size and complete compatibility of face and plaster were the main reasons for specifying concrete block for this project.



5. Mulbarton Med Centre, Gauteng



An excellent example of the versatility of concrete. From the use of concrete segmental paving, to columns and beams, block infill and concrete face brick, Mulbarton Clinic shows off the flexibility of concrete in a most attractive and impactful way.

On the practical side, concrete's high bulk density provides good sound insulation and its thermal capacity minimises daytime / night-time temperature fluctuations.

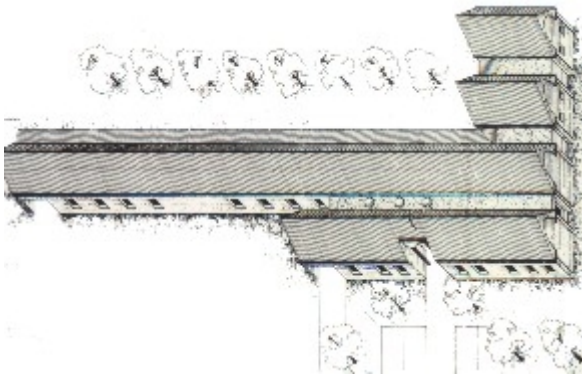


6. Thembelitsha Rehab Centre, Umtata



Umtata's Thembelitsha Centre is planned to be one of the largest rehabilitation complexes in the region. The recently completed first phase treatment block is to be followed by successive phases to include male and female residential blocks, a dining/laundry facility and an additional treatment block which will then allow phase one to be converted into an administration block.

Banding of Rockface and Smoothface blocks creates a most attractive façade and well illustrates the versatility of concrete masonry, allied to ease of construction and the benefits of a virtually maintenance-free exterior.



AXONOMETRIC VIEW
OF PHASE 1



7. Esidweni Community Centre, Umlazi



Simple and fast construction with some rather interesting design elements that generate warmth and good interest in this important facility for the community.

10 good reasons for choosing concrete masonry:

1. Size consistency
2. Modular units
3. High bulk density
4. Choice of plaster and face
5. Available in block and brick
6. Movement similar to concrete frame
7. Wide range of compressive strengths
8. Lower cost of blocklaying
9. Lower finished walling costs
10. Greater flexibility in design and application



**Concrete
Manufacturers
Association**

Head Office

PO Box 168 Halfway House 1685
Tel: +27118056742
Fax: +27113154683
Email: cma@cis.co.za
Website: <http://www.cma.org.za>

Western Cape Regional Office:

GR Koch
PO Box 7231, Roggebaai,
Cape Town 8012
Tel./Fax: +27214612511
Cell: 0824547657
Email: imes@mweb.co.za

Concrete Manufacturers Association - Membership List (Masonry) 2001/2002

Cape Brick	(021)5112006	Morula Brick & Sand (Pty) Ltd*	(012)5491727
Concor Technicrete (Pty) Ltd *	(011)4952200	Neat Contech cc*	(046)6481359
Corobrik (Pty) Ltd*	(031)5603911	Precast Concrete Industries (Namibia)	(09264)612804103
Columbia DBL (Pty) Ltd*	(021)9051665	Stanger Brick & Tile (Pty) Ltd*	(032)4570237
Deranco Blocks (Pty) Ltd*	(041)4633338	Watson Concrete*	(011)7400910 (011)8733949
False Bay Bricks (Cape)*	(021)9041620	Western Granite Bricks (Pty) Ltd*	(021)9041620
Inca Masonry Products (Pty) Ltd*	(043)7451215	White River Cement Bricks	(013)7501271
Infraset*	(012)6520000		
Lategans Cement Works*	(021)8731154		
*Companies which hold the SABS mark			